



Huliau Food & Film Festival

*A farm-to-table celebration of local agriculture
featuring local chefs and student-produced films*

August 23rd, 2025

Event Sponsorship Information

Aloha,

We are writing to invite your business to sponsor our annual Huliau Food & Film Festival on August 23rd, 2025 to benefit Maui Huliau Foundation's environmental education programs for Maui youth. This is a great opportunity to show your support for environmental education for Maui's youth while also making a very unique community event possible. Mahalo for your consideration and we look forward to hearing from you!

Mahalo,

Malia Cahill

Executive Director & Founder

Event summary:

The Huliau Food & Film Festival is a farm-to-table celebration of local agriculture featuring local chefs and student-produced films. This year's event will take place outdoors at Sugar Beach Event's beautiful oceanfront venue in north Kihei. The event will be open to 140 guests with pre-assigned outdoor seating. This year's event will feature student films and a five course meal featuring farm-to-table dishes prepared by local chefs. Sugar Beach Events will run a cash bar featuring locally-produced cocktails, beer, and wine. Funds raised will benefit Maui Huliau Foundation's environmental education programs for Maui youth. Last year, our sponsors helped raise a net of over \$20,000 for Huliau programs!

About Maui Huliau Foundation:

Maui Huliau Foundation is a 501(c)(3) non-profit whose mission is to promote environmental literacy and leadership among Maui's youth. Through our unique hands-on programs, we seek to educate and empower youth to become future stewards of our natural environment. We accomplish this by engaging them in real-life projects alongside community members, which help them realize the power they have in creating positive change for our islands. We also facilitate the passing on of intergenerational 'āina-based knowledge, and empower diverse youth voices in community conversations about environmental issues. You can read more about our programs and accomplishments in the attached annual report.

Contact Information: (808) 757-2100 info@mauihuliaufoundation.org PO Box 977 Ha'ikū HI 96708



Huliau Food & Film Festival

*A farm-to-table celebration of local agriculture
featuring local chefs and student-produced films*

August 23rd, 2025

Event Sponsorship Form

You may also submit this form on-line at mauihuliaufoundation.org/sponsorship

Event Sponsorship \$1,500

Included benefits:

1. Reserved table for up to 6 guests and on-stage recognition at the event
2. Logo on all event promotion: event flyers, event website, social media posts and advertisements
3. Logo on screen at the event between scheduled entertainment and films

Company Name: _____

Contact Person: _____ Contact Phone: _____

Mailing Address: _____

Email Address: _____

Payment Method: (select one)

☐ My check made out to "Maui Huliau Foundation" is enclosed.

☐ Please email an invoice to the address above

You may also submit this form on-line and pay via credit card: mauihuliaufoundation.org/sponsorship

A 3% service charge will be added to credit card payments to cover processing fees.

Please email form to info@mauihuliaufoundation.org or return by mail to:

Maui Huliau Foundation

PO Box 977

Ha'ikū HI 96708.

Maui Huliau Foundation is a 501(c)3 non-profit organization (FEIN #27-2591742)

Contact Information: (808) 757-2100 info@mauihuliaufoundation.org PO Box 977 Ha'ikū HI 96708



Maui Hulīau Foundation

MAUI HULIAU FOUNDATION

ANNUAL REPORT

2024



PROMOTING ENVIRONMENTAL
LITERACY AND LEADERSHIP
AMONG MAUI'S YOUTH

WWW.MAUIHULIAUFOUNDATION.ORG



A MESSAGE FROM OUR EXECUTIVE DIRECTOR & TEAM

This year has been one of transition and new beginnings for our organization. In 2024, we said goodbye to valued staff members and welcomed new team members, including two alumni who returned to support our filmmaking program. Their presence, along with our growing alumni network, marks an exciting new chapter for Huliau—one where former students take on leadership roles and inspire the next generation. We also welcomed a new staff member mid-year, who has helped to grow our program capacity and composed an *oli* for our organization, which is featured on the next page.

New partnerships also shaped our journey this year. The launch of the Ho‘ākea partnership with Hui o Wa‘a Kaulua and other wa‘a-based partners statewide expanded hands-on learning opportunities for thousands of students and strengthened ‘āina-based education in the DOE. Our collaboration with Hisako Film Lab will help students refine their storytelling skills and connect with filmmaking professionals, further amplifying their voices.

Despite challenges, our programs thrived in 2024. Our Leadership Council deepened their engagement with environmental issues, culminating in an unforgettable O‘ahu trip hosted by alumni. We expanded professional development initiatives, working with hundreds of teachers to integrate HĀ-strengthening practices and ‘āina-based education into classrooms and campuses. Through our programs and support of student-led climate literacy and zero waste efforts, we continued fostering environmental literacy and leadership among Maui’s youth.

At its core, our work has always been about empowering young voices. In a time of great division and growing challenges for environmental causes, it is more important than ever to equip students with the tools to share their stories and advocate for their communities' future. Through film, leadership, and hands-on engagement with ‘āina, we are helping students find their voices and shape a more just and sustainable future.

Mahalo to our students, educators, partners, and supporters who have helped make 2024 a year of growth and renewal. Mahalo for being part of our story—we look forward to continuing this journey together, uplifting the next generation of leaders and storytellers.

HULIAU

"Turning point"
"Time of change"
"To recall the past"

NO MAUI HULIAU

NA NĀ PŪKANA O HULIAU, KA'IULANI KANIAUPIO ME IKAIKA MENDEZ
BY THE HULIAU ALUMNI COUNCIL, KA'IULANI KANIAUPIO AND IKAIKA MENDEZ

Kilakila 'o Haleakalā ma ka hikina
Hiki mai nā ao maho'a o 'E'eka
He lei 'ohu, he lei malu, he lei ao
A he ao mālamalama ka'u e huli nei
Huli ke alo i luna, huli ka lima i lalo
Huli i ke au nui, huli i ke au iki

Huli aku, huli mai, e kūkulu a pa'a
Mai pa'a i ka leo ka'ika'i honua
Ka nu'a kama o Maui Huliau
E mau ana ka hā o ke aloha 'āina
E ola, e ola kākou ē



THE STORY BEHIND OLI MAUI HULIAU

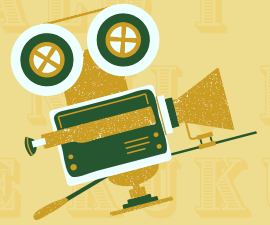
*Kilakila 'o Haleakala ma ka hikina
Hiki mai na ao maho'a o 'E'eka*



Just as our majestic mountain, Haleakalā, stands proudly to welcome the sun, so do we, Maui Huliau, strive to emulate while embracing the knowledge that our ever-changing environment brings. This is the beginning line to our new Oli Maui Huliau, a chant that is both representative and purposeful. In a 4-part introductory series to Hawaiian Protocol and Chant, the Huliau Alumni Council, with the guidance of Ka'iulani Kaniaupio, our newest staff member, and haku mele, Ikaika Mendez, created an oli that embodies who we are, where we come from, and all we strive to be. Rooted in kaona (hidden meaning), this oli paints a vivid image of the island home we come from, speaks to the resilience and spirit of Maui Huliau and reminds our inspiring youth to remain steadfast, daring, and committed to building amidst the constant change of today's climate. At its core, the chant calls for all to gather together to promote a sustainable livelihood for all. Mahalo to all the students, alumni, community members and staff who have contributed to the creation of Huliau's newest addition! The Oli Maui Huliau is more than just words, it is a living, breathing representation of our collective journey.

E ola, e ola kākou e!

HULIAU ENVIRONMENTAL FILMMAKING CLUB



In 2024, our Huliau Environmental Filmmaking Program continued to provide Maui students with unique opportunities to explore storytelling through an environmental lens. We ran condensed filmmaking programs during spring and fall break. In the spring, students created environmental TV commercial parodies, satirizing industries like insurance, fast food, and pharmaceuticals. Fall break introduced AI-assisted scriptwriting, leading to student films focused on invasive species and the evolution of agriculture on Maui.

Throughout the year, we also worked with teachers, students, and partner organizations to create additional films. With Maui Economic Opportunity's afterschool program, students produced a film exploring the connection between outdoor spaces and mental health. With St. Anthony's media program, we created an educational film teaching elementary students about the Three Rs. Lahainaluna Kaiapuni students worked on a short documentary interviewing community members about *wahi pana* (sacred places) on Maui's west side.



Seven films from the previous school year were selected for four different festivals in 2024, including HIFF's 'Ōpio Fest in Honolulu and the Colorado Environmental Film Festival in Golden, Colorado. We organized trips for students to attend both events, allowing them to showcase their work and connect with other filmmakers and environmental advocates.

he lei oku he lei malu he lei ao



a he ao malamalama. ka'u e huli nei

In August, we faced the unexpected loss of our filmmaking program director as he accepted a position at another nonprofit. In response, we welcomed two alumni of our programs as part-time filmmaking program assistants, allowing them to support our students while also offering them part-time employment as they launch their own careers in filmmaking and photography.

Looking ahead to 2025, we are excited to partner with the newly established Hisako Film Lab, founded by Ha'ikū-born director Destin Daniel Cretton and his 'ohana. By combining our expertise in environmental and cultural storytelling with Hisako Film Lab's filmmaking knowledge and Hollywood connections, we aim to help students build professional networks, refine their storytelling skills, and create powerful films addressing key issues in our community.





2024 STUDENT FILMS

WATCH
ALL OUR
STUDENT
FILMS AT
[YOUTUBE.COM/MAUIHULIAU](https://youtube.com/mauihuliau)



EARTH LOOKS FOR INSURANCE



BURGER QUEENS



ECO NO MORE



UNCLOUDED



THE THREE RS



KŪPA'A LAHAINA



MAUI MAYHEM



ISLANDS OF RESILIENCE

HULIAU LEADERSHIP COUNCIL



The 2024-25 Huliau Leadership Council consists of 14 students from 5 high schools on Maui. These students meet twice a month to learn from professionals working in fields like water conservation, watershed restoration, and native species rehabilitation. The purpose of the program is to increase students' environmental literacy and to engage them directly with local environmental efforts.

**Service project with
Maui Nui Seabird Recovery Project**



huli ke alo i luna

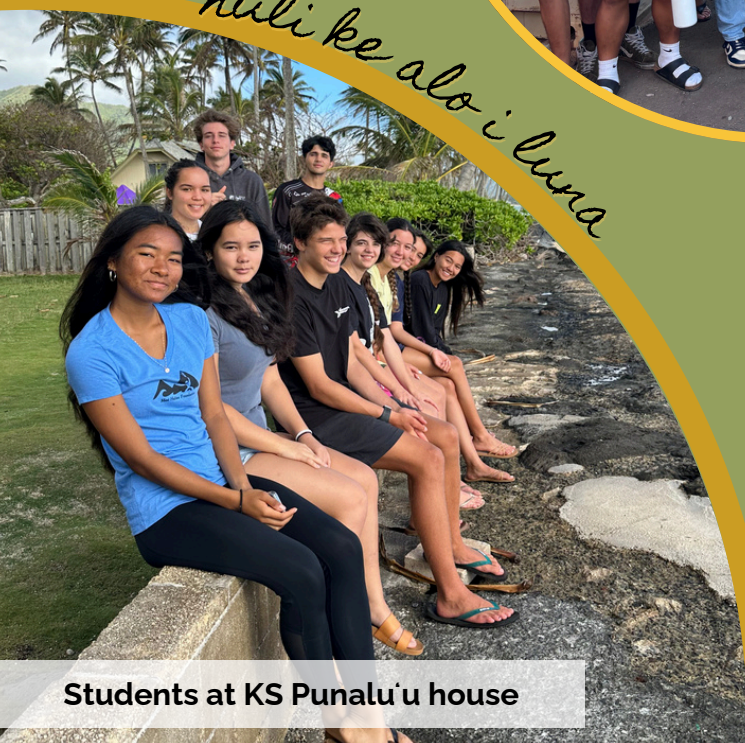
huli ka lima i lalo

O'ahu Year-End Huaka'i

To wrap up the 2023-24 school year, our Leadership Council and staff visited O'ahu to visit with alumni and celebrate our year's achievements together. They visited an alumna working at the State Supreme Court and toured Kualoa Ranch with another alumna who had worked in their diversified agriculture operations.

They also volunteered with various 'āina-based partners like Kōkua Learning Farm and Kāko'o Ōiwi. Looking ahead to 2025, we're excited to continue this tradition with a visit to Kaua'i.

Students at KS Punalu'u house



HULIAU LEADERSHIP COUNCIL

SERVICE PROJECTS

*huli i ke ao nui
huli i ke ao 'iki*



2024-25 OVERNIGHT ORIENTATION

To kick off our 2024-25 program, we spent the weekend at Waihe'e Coastal Dunes & Wetlands Refuge. There we participated in a beach clean up, learned an oli hei, and enjoyed locally sourced ingredients for dinner & breakfast!



WAIPONO FARM • SEPTEMBER 2024

We toured the aquaponic & hydroponic greenhouse at UH Maui's Waipono Farm to learn about the significance of these food systems. As a mahalo to our hosts, students worked together to scrub down fish tubs and plant pots.

SEABIRD NESTING SITE • OCTOBER 2024

Our students gathered at Ho'okipa Beach Park to learn about the 'ua'u kani nesting area from Maui Nui Seabird Recovery Project. Using their surveying tools, we were able to peek inside the burrows and see the 'ua'u kani chicks!



KULA COMMUNITY WATERSHED ALLIANCE • NOVEMBER 2024

For our fall service project, we took part in a native planting day with Kula Community Watershed Alliance. The area being planted was a part of the 200 acre burn scar from the 2023 wildfires. Students worked alongside members for the watershed alliance and community. to plant natives like 'ōhi'a and koa.



HULIAU CLIMATE LITERACY PROJECT



442 students served

In 2024, our Climate Literacy Project served approximately 442 students from six different middle and high schools on Maui. Of these students, 226 of them completed initial investigations into climate change solutions using Project Drawdown.

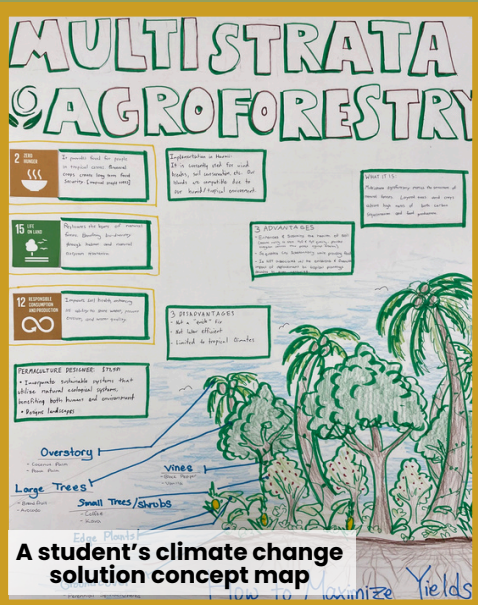


huli aku

Due to the departure of our Program Director mid-way through spring semester, we had to temporarily scale back programs for the fall. We have since been able to hire a new Program Assistant and are working to rebuild capacity.

Now in the 2024-25 school year, we have four upcoming programs on the calendar and hope to schedule a few more!

huli mai



FIELD TRIPS

We hosted a field trip this school year for 18 students from King Kekaulike High School focused on marine impacts and conservation. Our staff led activities related to sea level rise and coastal erosion, and activities hosted by Maui Nui Marine Resource Council and Maui Ocean Center Marine Institute focused on ocean monitoring and corals.



Program Survey Results

86%

feel that climate change will impact their lives

78%

feel more aware of climate change solutions and think governments, businesses, and individuals need to take immediate action

HULIAU GREEN EVENTS & ZERO WASTE SCHOOLS



22 events
served



over **34,000**
attendees

4,900

lbs of waste
diverted from the
landfill

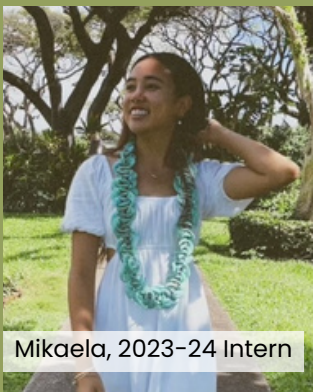
80%

diversion rate

Our Huliau Green Events program worked with 20 community events and 2 private events in 2024 to divert 4,900 lbs of waste from the landfill. We also trained 127 volunteers to help with education at the waste stations.

Zero Waste Internships • 2023-24 & 2024-25

During the 2023-24 and 2024-25 school years, we had 2 cohorts of students participate in our Zero Waste Internship. They spent their hours learning about zero waste principles, working at community events, and creating projects related to zero waste!



Mikaela, 2023-24 Intern



Aurora, 2023-24 Intern



Anuheq, 2023-24 Intern



Rachael, 2024-25 Intern



Nohi, 2024-25 Intern



Chelsey, 2024-25 Intern



Eva, 2024-25 Intern

*Mai pa'a
i ka leo
ka'ika'i
honua*



HULIAU GREEN EVENTS

COMMUNITY EVENTS GOING GREEN!



ka nu'a kama o Maui Huliau



MONTESSORI OF MAUI EARTH DAY

In April, the Montessori School of Maui hosted an Earth Day celebration for their school's community. With the help of some student volunteers, we diverted **15.6lbs** of waste from the landfill which was **92%** of the entire event's waste.

LĀ 'ULU

In September, we participated in Maui Nui Botanical Garden's Lā 'Ulu (Breadfruit Day). With the support of MNBG staff and volunteers, we diverted **142.9lbs** of waste from the landfill which was **93%** of the entire event's waste.



ROOTS REBORN DÍA DE LOS MUERTOS

One of our last event's of the year was Roots Reborn's Día De Los Muertos event in September. With our student interns and volunteers, we diverted **597.4 lbs** of waste from the landfill which was **85%** of the entire event's waste.



KŪKULU PILINA

e kukulu a pa'a!

PROFESSIONAL DEVELOPMENT PROGRAMS FOR DOE TEACHERS

In 2024, our Kūkulu Pilina professional development series and PDE3 course, as well as ‘āina-based field trips for teachers and students, represented our largest area of program growth. Through professional development sessions and on-campus events at Lāhaināluna High, King Kekaulike High, Kalama Intermediate, and Lokelani Intermediate, we engaged over 170 teachers and 755 students in cultural activities, campus beautification, and other campus-wide practices and programs to strengthen the HĀ outcomes (Belonging, Responsibility, Excellence, Aloha, Total Well-Being and Hawai‘i). We also facilitated ‘āina-based sessions for 103 teachers, deepening their experience of HĀ and connection to place.

In fall 2024, we hosted 17 days of field trips for over 3,000 students from 21 schools. The four-day Ho‘ākea Maui: Mauka to Makai event alone engaged 1,250 students in hands-on learning with 30+ ‘āina and wa‘a-based organizations, from exploring traditional navigation techniques, to learning about the importance of our native watersheds. Inspired by Hōkūle‘a’s Moananuiākea Voyage, this event aims to encourage our students, schools, and larger community to embrace the “Navigator Mindset” and become the leaders, stewards, and critical thinkers that can meet the challenges of a rapidly changing world. We were then invited to partner on nine additional days of field trips for Hōkūle‘a’s Pae ‘Āina Sail visit to Ma‘ālaea harbor, resulting in an additional 1,300 students being served. In addition, we served another 700 students through other field trips organized with Waiohuli Kai, Maui Nui Botanical Gardens and Pacific Whale Foundation.



In June, we launched a revised PDE3 credit course for DOE teachers, focusing on "rooting learning in Hawai‘i" and HĀ-aligned lesson planning. The new version of the course now includes a campus-wide action research project where teachers implement and evaluate HĀ-strengthening practices. As we enter 2025, 15 teachers are working to complete portfolios.

This summer and fall, we partnered with Noho‘ana Farm, Hawai‘i Land Trust, Hui o Wa‘a Kaulua, and others to host three ‘āina-based for DOE teachers from all schools. These focused on traditional agricultural practices, Polynesian navigation, and stewardship of our watersheds and marine environments.

Our growing reputation as a logistical and educational partner has strengthened relationships with schools and community organizations, positioning us for expanded Kūkulu Pilina programming in 2025.



over **260** teachers and
3,700 students served

KŪKULU PILINA

EVENTS & ACTIVITIES AT LĀHAINĀLUNA

KĪPUKA OLOWALU

MARCH 15, 2024

Teachers and staff visited Kīpuka Olowalu to learn about their conservation efforts, propagate milo seeds, harvest and process kalo from their lo'i, and explore the area's diverse native plant species.



KĪPUKA OLOWALU

LĀ HO'OMANA'O

AUGUST 7, 2024

Our staff had the honor of helping to coordinate Lahainaluna's Lā Ho'omana'o on the eve of the Lahaina fires 1 year anniversary. Students participated in activities like propagating native plants, learning mele, creating art, making lei, and playing makahiki games to build pride and community. It was an inspiring and refreshing way to start the school year for students and faculty on campus.



LĀ MĀLAMA I KE KUMU

JANUARY 7, 2025

Our staff helped organize this day to mālama the mental health of the hardworking kumu at Lahainaluna. Throughout the morning, these kumu were able to participate in 3 different activity stations.



WISDOM CIRCLES
OCEANIA



Stations included a mālama 'āina station aimed at replacing invasive grasses on the Boarder's field with native plants, a mālama kula station where they created vision boards to set campus and personal goals for the new semester, and a mālama kino station where kumu enjoyed lomilomi, drinking immunity 'ōlena shots, and therapeutic stenciling and lei making with Wisdom Circles Oceania .

KŪKULU PILINA

ACTIVITIES AT LOKELANI, KALAMA & KEKAULIKE



FISHING AT
KALEPOLEPO

SAMUEL E. KALAMA INTERMEDIATE

HUAKA'I HA'IKŪ - FRIENDS OF TWIN FALLS

AUGUST 2, 2024

Huliau staff joined the Kalama teachers on a PD 'Āina day at Ho'olawa Valley in Ha'ikū. We helped facilitate 3 different activity groups; lei making, weeding and mulching with the Friends of Twin Falls team, and a short hike with Hike Maui. It was such an enriching experience and a great way to kick off the school year!



LOKELANI INTERMEDIATE

MAKAHIKI ACTIVITIES

OCTOBER- JANUARY 2025

Our staff hosted sessions at Lokelani to help teachers create activities for students about makahiki and Hawaiian culture. These activities centered around ku'i kalo demonstrations, a door decorating contest to showcase student learning about makahiki, and an 'ulu poke pā'ina.



HĀ MURAL AT
LOKELANI



LEARNING MO'OLELO
OF WAIOHULI KAI



WAIOHULI KAI - 'ĀINA DAY

NOVEMBER 1, 2024

Teachers and administrators visited 'Āinakūko'a O Waiohuli Kai to develop kilo (observation) skills, practice weaving, learn about fishing practices, and care for the land. They cleared invasive grasses and cared for the coastal native plants. The day concluded with a debrief on campus, where they reflected on their experiences.



ULU POKE FOR
PĀ'INA MAKAHIKI

KING KEKAULIKE HIGH SCHOOL

NATIVE PLANTING ON CAMPUS

NOVEMBER 13, 2024

Kumu from our PDE3 Course collaborated with East Maui Watershed Partnership, Kaiapuni seniors, and Hui Ho'opulapula students to plant over 700 native plants at King Kekaulike High School. With support from Maui Native Nursery and UH Foundation, the plants were chosen to thrive with minimal care, prevent erosion, improve green spaces, and attract native pollinators. This area is now a living learning space where students collect data on plant growth and sustainability.



KŪKULU PILINA

‘ĀINA-BASED FIELD TRIP SUPPORT FOR STUDENTS



LEARNING HOW TO
HO‘OLEI ‘UPENA

WAIOHULI KAI

APRIL 5, 2024

The 7th grade class at Lokelani Intermediate explored wetland habitats at Waiohuli Kai. They helped to clear invasive grasses from the area and learned about traditional fishing practices. Students even had a chance to cast a fishing pole and net.



MAUI NUI BOTANICAL GARDENS

OCTOBER 22-24, 2024

During this week of huaka‘i, students at Maui Waena learned about the various species of kalo and ‘uala at the botanical garden and about the importance of our native watersheds.



HO‘ĀKEA MAUI & HŌKŪLE‘A’S PAE ‘ĀINA SAIL

FALL 2024

In September, we had the honor of partnering with Hui o Wa‘a Kaulua and over 40 wa‘a and ‘āina-based partners on 4 days of field trips as a part of the new Ho‘ākea Maui partnership.



Over
3,000
students
served

Then in October we also helped to host a series of field trips for students centering on Hōkūle‘a’s Pae ‘Āina Statewide Sail. Over 3,000 students from various Maui schools participated these field trips that were focused on perpetuating foundational values and perspectives of wa‘a and those who came before us.



PACIFIC WHALE
FOUNDATION



SUMMER PROGRAMS



Native plant & farm tour at Kīpuka Olowalu

Huliau EcoAdventure

Our annual alumni-led Huliau EcoAdventure engaged 17 students in hands-on activities and service projects. They visited Kīpuka Olowalu to learn about native species, Maui Ocean Center Marine Institute to explore marine ecosystems, and Noho‘ana Farm to experience traditional lo‘i kalo cultivation and water stewardship.



Making pa'i'ai at Noho'ana Farm

Marine Science Summer Camp

In June, we hosted a two-day Marine Science Camp focused on careers in marine science. Students surveyed ‘ua‘u kani nests and planted native grass with Maui Nui Seabird Recovery Project, explored tidepools with Maui Digital Bus, and examined marine life under a microscope. They also joined a service project at Tipu Tipu Restoration’s nursery, learned about reef protection, and visited Maui Ocean Center and MOC Marine Institute to explore careers in marine conservation, coral restoration, and sea turtle rehabilitation.



Collecting fire worms at Maui Ocean Center Marine Institute



Collecting tidepool specimens with Digital Bus



On the trail from Holua Cabin

Haleakalā Crater Overnight

In July, we resumed our Haleakalā Backpacking Trip for the first time since the pandemic, with six high school students joining an overnight hike to Holua cabin. Co-led by Huliau Alumni Council member Troy Lau, who participated in our very first trip in 2014, the trip included hiking, stargazing, card games, native plant ID, and enjoying the beauty of Haleakalā—all without cell phones.



Crater Sunrise

Huliau Alumni Council

A new generation of alumni join our team



Founded on our 10th anniversary, the Huliau Alumni Council has grown into a network of 10–15 active members who support our mission while pursuing careers in environmental stewardship and community engagement. Meeting regularly over Zoom, they reconnect, share updates, and advise us on program development. For the past three years, they have also run an annual scholarship for graduating seniors and a December wreath-making fundraiser using locally sourced materials—this year’s event was our largest yet!

While alumni have led our EcoAdventure summer program for a decade, they are increasingly involved in other programs, inspiring the next generation. This year, they helped plan and lead our Leadership Council trip to O’ahu, even hosting students at their workplaces. They also contributed to creating an oli for our organization, featured in this report, which will be taught to students in 2025.

Three alumni featured below have been especially active this year. Hannah Peila (‘14) has led the Council for four years, served on our board of directors, and recently co-founded a sustainability consulting firm. A silver lining of losing staff members this year was the opportunity to hire two alumni part-time. Kiana Liu (‘19) expanded her role in our filmmaking program, while also helping to lead a student film festival trip to Colorado. Troy Lau (‘18) supported both our filmmaking program and Ho’ākea field trips while also co-leading our summer backpacking trip, which he previously attended as a student.

As the council’s oldest members approach their 30s, they continue to grow—getting married, having children, and launching careers in law, consulting, filmmaking, sustainable agriculture, marine science, and more. Their leadership and involvement keep Huliau’s impact strong for future generations.



Troy leading our backpacking trip



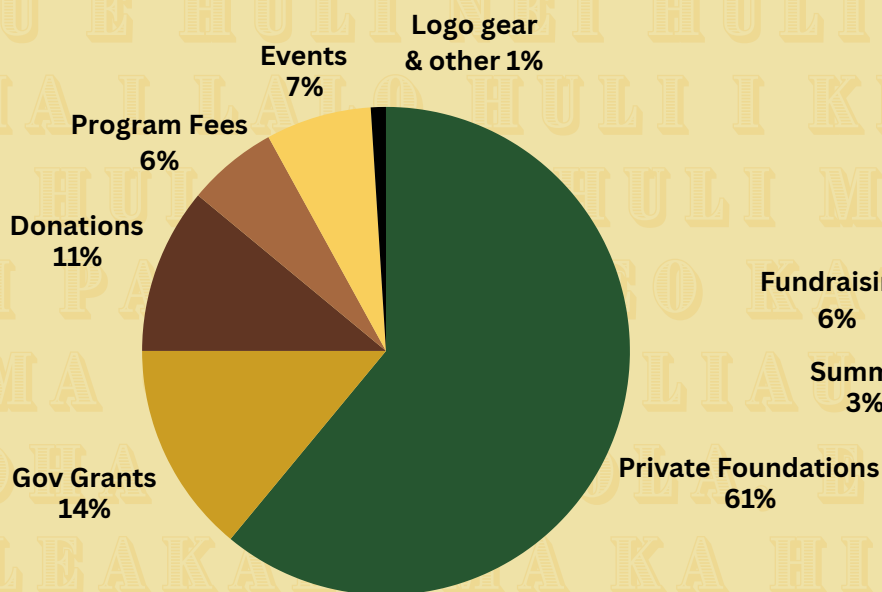
Hannah speaking at wreath-making



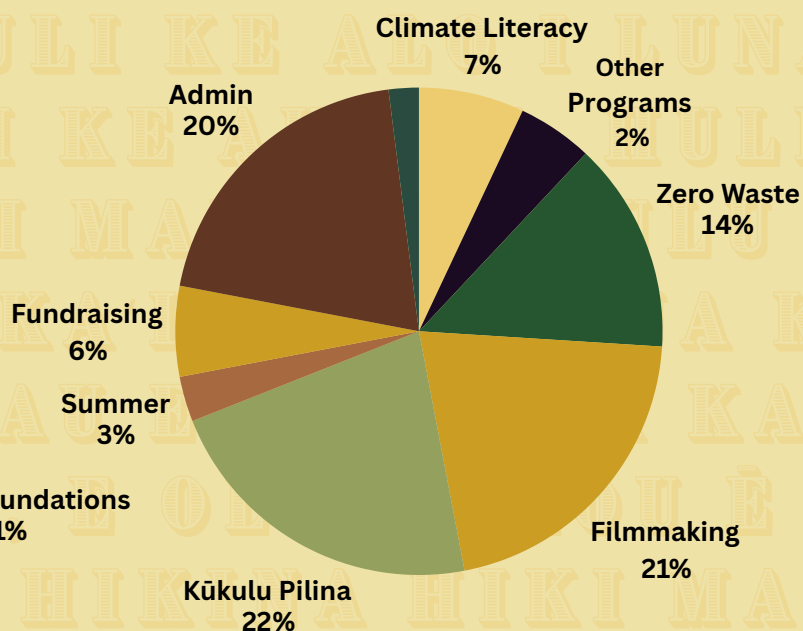
Kiana teaching filmmaking basics

Financial Report & Outlook

2024 Funding Sources



2024 Expenses by Program



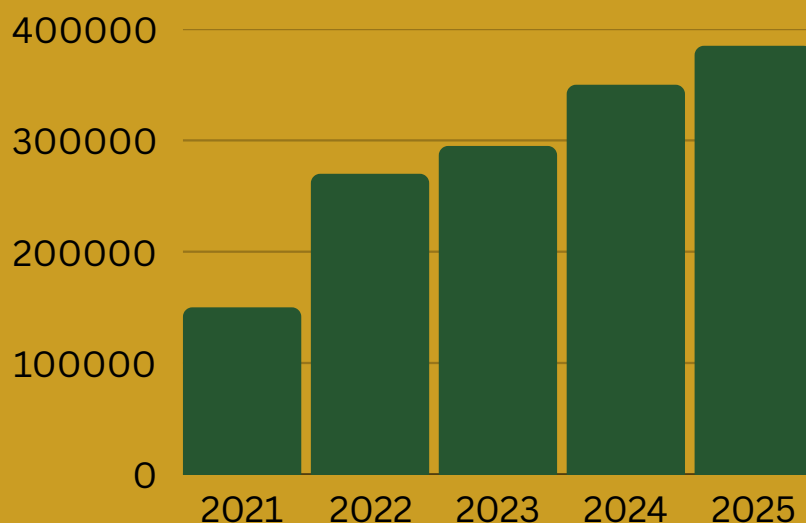
*Other programs include Alumni Council & Careers in Conservation

Mahalo to

- The Stupski Foundation
 - Hau'oli Mau Loa
 - Hawai'i Community Foundation
 - Nuestro Futuro Foundation
 - County of Maui (DEM)
 - Kaiser Permanente Foundation
 - Makana Aloha Foundation
 - 100 Women Who Care Maui
 - Johnson 'Ohana Foundation
 - Bendon Family Foundation
 - The AJA Foundation
 - Charles & Mitch Ota Foundation
 - National Board of Medical Examiners
- and all our donors, sponsors and attendees!

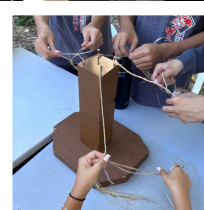


ANNUAL OPERATING BUDGET GROWTH



2024 MEMORIES

*E mau ana ka ha o ke aloha 'aina,
E ola, e ola kakou e!*



Maui Hulāiau Foundation



Follow us @mauihulāiau