

# WORLD CENTRIC



*For a better world*



## PRODUCTS MADE FROM PLANTS WILL TURN INTO SOIL

- **FOODSERVICE PRODUCTS TO MEET YOUR SUSTAINABILITY GOALS**
- **WE OFFSET OUR CARBON EMISSIONS**
- **CUSTOM DESIGNS AVAILABLE**
- **INNOVATIVE SOCIAL AND ENVIRONMENTAL GIVING — 25% OF PROFITS**
- **WINNER OF B CORPORATION 'BEST FOR THE WORLD' ENVIRONMENT 2015**



**COMPOSTABLE**  
IN INDUSTRIAL FACILITIES

Check locally, as these do not exist in many communities. Not suitable for backyard composting. CERT # 1918104



# OUR VISION

We envision a world where everyone's basic needs are met with a beneficial impact on the environment.

---

## THE IMPORTANCE OF COMPOSTABLES

More than 20 million tons of plastic are placed in U.S. landfills each year. Products made from plants, not petroleum, conserve oil resources and support cleaner production methods while protecting the health of our planet and diverting waste from the landfill.

Our products are:

- **Fully compostable** in a commercial composting facility.
- Made from **annually renewable plants** such as wheat straw and corn.
- **Non-polluting** and non-toxic when composted.
- **Energy-saving.** Our eco-profile analysis shows we can make 2 compostable forks with the energy it takes to make 1 plastic fork.
- Approved for food use according to **FDA standards.**

## OUR PROMISE

### Quality

Our products are designed for performance, strength and aesthetic.

### Certifications

Our claims are 3rd party verified:

- Biodegradable Products Institute (BPI) certifies that our compostable products meet ASTM D6400 and ASTM D6868 standards for commercial compostability.
- USDA Biobased Product labels indicate that a product is composed partly or entirely of renewable plant material.
- Forest Stewardship Council (FSC) enforces responsible management of forests.
- B Corporations are a new type of corporation which use the power of business to solve social and environmental problems.
- 1% for the Planet is a global network of businesses that donate 1% of annual sales directly to approved environmental nonprofit organizations.

### Manufacturing Audits

We regularly audit outsourced factories under Fair Labor Organization guidelines to ensure fair wages and working conditions.

## HOW IT ALL STARTED

World Centric was founded in 2004 with a mission to reduce economic injustice and environmental degradation through education, community networks, and sustainable enterprises. We are one of the few companies in the U.S. to sell only high-quality, 100% certified compostable products while striving to be a model of sustainability and supporting nonprofit organizations. In 2010 we became a Certified B Corporation, and in 2013 converted our legal structure to a California Benefit Corporation, demonstrating our continued commitment to having a positive impact on society and the environment.



## OUR GIVING

School for children in Sierra Leone—made from recycled materials.



# WORLD CENTRIC DONATES AT LEAST 25% OF PROFITS TO SOCIAL & ENVIRONMENTAL ORGANIZATIONS

**2010**

**\$17,057**

in cash donations

**\$20,486**

in product donations

**2011**

**\$48,455**

in cash donations

**\$15,212**

in product donations

**2012**

**\$83,500**

in cash donations

**\$9,432**

in product donations

**2013**

**\$114,857**

in cash donations

**\$19,154**

in product donations

**2014**

**\$118,451**

in cash donations

**\$33,266**

in product donations

## SOCIAL & ENVIRONMENTAL RESPONSIBILITY

### Carbon Offsets

We partner with environmental and social organizations whose programs not only offset our carbon emissions but also create regenerative ecosystems.

### Giving

Each year we donate at least 25% of our pre-tax profits to support projects around the world that promote social and economic development, environmental education, and waste reduction.

### Impact Accelerator

We offer zero-interest long-term loans or donations to nonprofits and social enterprises aligned with our mission and values.

### Zero Waste

We strive to be a zero-waste office by reducing our consumption and diverting waste to compost and recycling.

## OUR PARTNERS

We are proud to partner with national and regional retailers, corporations, universities and organizations that recognize the importance of a sustainable lifestyle. Our retail and food-service customers include: Microsoft, Facebook, Genentech, Stanford University, University of California at Berkeley, Sprouts, Amazon.com, SamsClub.com, Safeway, Ralph's, Fred Meyer, Fresh Market and Novation—a supply chain GPO for the healthcare industry.

**NEW IN 2015!**

# MADE IN THE USA

## Introducing US Grown & Manufactured MISCANTHUS FIBER PRODUCTS

### About Miscanthus Fiber

- Made from miscanthus, a perennial, non-invasive grass that thrives with minimal care and water
- Utilizes marginalized farmland unsuitable for food crops
- Provides a new source of income for American farmers
- Creates manufacturing jobs in rural America
- Carbon neutral, sequesters carbon due to long root systems

### Initial SKUs include:

PL-MC-9	9" Unbleached Miscanthus Fiber Plate
TO-MC-6	6x6x3" Unbleached Miscanthus Fiber Clamshell
TO-MC-96D	9x6x3" 2 Compt Unbleached Miscanthus Fiber Clamshell
TO-MC-8	8x8x3" Unbleached Miscanthus Fiber Clamshell
TO-MC-9	9x9x3" Unbleached Miscanthus Fiber Clamshell
TO-MC-9T	9x9x3" 3 Compt Unbleached Miscanthus Fiber Clamshell
TO-MC-96	9x6x3" Unbleached Miscanthus Fiber Clamshell



# NEW! IN 2015 EXPANDING OUR FOODSERVICE LINE TO MEET YOUR NEEDS



**3 Compartment Catering Pan**



**3 Compartment Fiber Tray**



**24 oz COMPOST-A-PAK™**

## Tray



**10x7.5x3"  
3 Comp**  
TR-SC-10T3, p6

## Clear Clamshell



**8x8x3"  
3 Comp**  
KL-CS-8T, p10

## Clear Lid/Soufflé Holder



**for 9Q-24 oz Cups**  
CPL-CS-12SH, p9

## Clear Deli Containers + Lid



**Round,  
24 oz**  
DC-CS-24, p10



**Round,  
32 oz**  
DC-CS-32, p10



**Rectangular,  
48 oz**  
RD-CS-48, p10



**Rectangular,  
64 oz**  
RD-CS-64, p10



**for 48-64 oz  
Rectangular**  
RDL-CS-48, p10

## Clear Salad Bowl + Lid



**16 oz**  
SB-CS-16, p10



**Lid**  
SBL-CS-16, p10

## COMPOST-A-PAK™



**24 oz**  
FP-SC-1, p7



**48 oz**  
FP-SC-2, p7

## Catering Pan + Lid



**Half Size,  
1 Comp**  
CA-SC-120L, p6



**Half Size,  
2 Comp**  
CA-SC-112DL, p6



**Half Size,  
3 Comp**  
CA-SC-104TL, p6



**Lid**  
CAL-SC-104, p6

## Barrel Bowl



**8 oz**  
BB-SC-U8, p5

## Asian Soup Spoon



**6"**  
SP-TP-AS, p7

## Lids for Bowls



**for 2 oz  
Fiber Bowls**  
CUL-SC-2, p5



**for 4 oz  
Fiber Bowls**  
CUL-SC-U4, p5



**for 24-32 oz  
Fiber Bowls**  
BOL-SC-U24, p5



**for 24-32 oz  
Fiber Bowls**  
BOL-CS-24, p5



**for 32 oz  
Burrito Bowls**  
BOL-SC-UBB, p5



**for 12-32 oz  
Paper Bowls**  
BOL-CS-12D, p8

# COMING SOON!



**Adjustable Catering Pan**



**9" Fiber Square Plate**

## PLA Lined Trays & Box



**8x6x1.5"**  
TR-SC-U8L, p6



**10x7.5x1.5"**  
TR-SC-U10L, p6



**10x7.5x1.5"  
3 Comp**  
TR-SC-U10TL, p6



**9x7x2"**  
CT-SC-U2L, p7

## Modern Oval Plates



**10"**  
OV-SC-10, p5



**12"**  
OV-SC-12, p5

## Party Plates



**7", Wine**  
PL-SC-7WN, p5



**9", Cup**  
PL-SC-9CUP, p5

## Square Plates



**7"**  
SQ-SC-7, p5



**9"**  
SQ-SC-9, p5



**10"**  
SQ-SC-10, p5

## Domed Clear Lid



**for 6-8 oz  
paper bowls**  
BOL-CS-8D, p8

## Adjustable Half Size Catering Pan



**120 oz**  
CA-SC-120V, p6

## Also Coming Soon ...

- **Full Size Fiber Catering Pan**  
280 oz, CA-SC-280, p6
- **2 Comp Fiber Trays**  
8.5x6.5x1.75", TR-SC-17D & 8.5x6.5x2.75", TR-SC-27D, p6
- **Extra Dividers**  
for Adjustable Fiber Catering Tray, DV-SC, p6

## PLANT FIBER PLATES | BOWLS

- Made from leftover agricultural fiber
- Suitable for food up to 200°F
- Clear lids made from NatureWorks Ingeo™ compostable plastic, derived from corn grown in the USA
- No wax or plastic lining
- Microwave and freezer safe (clear lids are not microwave safe)
- Compost in 2-4 months in a commercial composting facility

Item #	Plates	Case Count	Pack Count	Gross (lbs)	Case Cube	TI/Hi
PL-SC-U6	6" Fiber Ripple Edge Plate	1000	50	16.0	0.93	9/8
PL-SC-U7	7" Fiber Plate	1000	50	24.5	1.76	6/6
PL-SC-U9	9" Fiber Plate	1000	50	39.0	2.72	4/6
PL-SC-U10	10" Fiber Plate	800	50	40.0	2.68	4/8
PL-SC-U10T	10" Plate, 3 Compt	700	50	34.0	2.09	8/5
PL-SC-U9O	9" Fiber Oval Plate	1000	50	32.8	2.19	6/5
PL-SC-U10O	10" Fiber Oval Plate	500	125	18.0	1.34	9/7
PL-SC-U12O	12" Fiber Oval Plate	500	125	31.0	2.05	6/7
SQ-SC-7	7" Fiber Square Plate	1000	50	32.0	1.50	9/5
SQ-SC-9	9" Fiber Square Plate	500	50	27.0	1.58	10/4
SQ-SC-10	10" Fiber Square Plate	500	50	38.0	2.07	8/4
OV-SC-10	10" Fiber Modern Oval Plate	400	50	34.5	1.70	6/6
OV-SC-12	12" Fiber Modern Oval Plate	200	50	25.3	1.17	9/6
PL-SC-7WN	7" Party Plate with wine glass holder	1000	20	36.3	2.91	4/4
PL-SC-9CUP	9" Party Plate with cup holder	400	50	20.4	2.68	4/7



Item #	Bowls	Case Count	Pack Count	Gross (lbs)	Case Cube	TI/Hi
CU-SC-U2	2 oz Fiber Bowl	2000	50	14.8	1.33	9/7
CU-SC-U4	4 oz Fiber Bowl	1000	50	13.5	1.49	9/6
BO-SC-U6	6 oz Fiber Bowl	1000	50	15.5	1.28	12/5
BB-SC-U8	8 oz Fiber Barrel Bowl	500	50	10.8	1.17	8/9
BO-SC-U11*	11.5 oz Fiber Bowl	1000	50	21.0	1.93	9/4
BB-SC-U12	12 oz Fiber Barrel Bowl	500	50	13.0	1.73	8/6
BB-SC-U16	16 oz Fiber Barrel Bowl	500	50	16.5	1.91	8/5
BO-SC-U24	24 oz Fiber Bowl	500	125	29.0	3.33	4/5
BO-SC-U32	32 oz Fiber Bowl	500	125	30.0	3.33	4/5
CUL-SC-2	LID - 2 oz Fiber Bowl	2000	50	10.0	1.21	4/6
CUL-SC-U4	LID - 4 oz Fiber Bowl	1000	50	7.0	0.63	12/12
BBL-SC-U12	LID - 8-16 oz Fiber Bowls, Fiber	500	50	9.0	1.86	8/5
BOL-SC-U24	LID - 24-32 oz Fiber Bowls, Fiber	500	125	19.0	2.93	6/5
BOL-CS-24	LID - 24-32 oz Fiber Bowls, Clear Ingeo™	300	50	11.0	4.36	4/4

NEW!  
NEW!  
NEW!  
NEW!



\* Does not fit BBL-SC-U12

Item #	Burrito Bowls	Case Count	Pack Count	Gross (lbs)	Case Cube	TI/Hi
BO-SC-UBBS	24 oz Fiber Burrito Bowl	400	100	21.0	2.03	6/7
BO-SC-UBB	32 oz Fiber Burrito Bowl	300	50	16.3	1.59	8/5
BOL-CS-UBBS	LID - 24 oz Burrito Bowls, Clear Ingeo™	400	50	11.0	2.69	6/7
BOL-CS-UBB	LID - 32 oz Burrito Bowls, Clear Ingeo™	300	50	12.5	2.87	6/7
BOL-SC-UBB	LID - 32 oz Burrito Bowls, Fiber	300	50	13.0	1.74	6/7

NEW!



# PLANT FIBER PLATES | BOWLS | TAKE OUT CONTAINERS | TRAYS (CONT'D)

- Made from leftover agricultural fiber
- Suitable for food up to 200°F
- Clear lids made from NatureWorks Ingeo™ compostable plastic, derived from corn grown in the USA
- No wax or plastic lining
- Microwave and freezer safe (clear lids are not microwave safe)
- Compost in 2-4 months in a commercial composting facility

Item #	Take Out Containers	Case Count	Pack Count	Gross (lbs)	Case Cube	TI/HI
PB-SC-U13	13.5x6.5x1.25" Fiber Flat Bread/Pizza Box	200	50	22.0	2.23	6/5
TO-SC-U15B	6x6x3" Fiber Burger Box	500	50	24.0	1.92	6/6
TO-SC-UHB	9x6x3" Fiber Hoagie Box	500	50	35.5	3.14	6/4
TO-SC-U34D	9x6x3" Fiber Clamshell, 2 Compt	500	50	40.0	2.69	6/4
TO-SC-U85-3	8x8.5x3" Fiber Clamshell, 1 Compt	300	50	29.0	2.25	4/6
TO-SC-U8T	8x8.5x3" Fiber Clamshell, 3 Compt	300	50	32.0	2.27	4/7
TO-SC-U9	9x9x3" Fiber Clamshell, 1 Compt	300	50	31.5	2.60	6/4
TO-SC-U9T	9x9x3" Fiber Clamshell, 3 Compt	300	50	32.0	2.27	4/7



Item #	Trays	Case Count	Pack Count	Gross (lbs)	Case Cube	TI/HI
TR-SC-U8	8x6x1.5" Fiber Tray	400	50	21.0	1.29	6/9
TR-SC-U8L	PLA-Lined 8x6x1.5" Fiber Tray	400	50	21.0	1.29	6/9
TR-SC-U8D	8x6x1.5" Fiber Tray, 2 Compt	400	50	21.0	1.34	6/9
TR-SC-U10	10x7.5x1.5" Fiber Tray	400	50	25.0	1.94	6/7
TR-SC-U10L	PLA-Lined 10x7.5x1.5" Fiber Tray	400	50	25.0	1.94	6/7
TR-SC-U10T	10x7.5x1.5" Fiber Tray, 3 Compt	400	50	27.0	1.94	6/7
TR-SC-U10TL	PLA-Lined 10x7.5x1.5" Fiber Tray, 3 Compt	400	50	27.0	1.94	6/7
TR-SC-10T3	10x7.5x3" Fiber Tray, 3 Compt	300	50	20.0	1.97	4/9
TR-SC-UAR	6.5x5x1.5" Fiber Tray	600	100	24.0	2.14	9/4
TR-SC-UT	8x6x1.5" Fiber Tray, 3 Compt	500	125	27.0	2.21	8/4
TR-SC-17D	8.5x6.5x1.75" Fiber Tray, 2 Compt	500	125	30.8	3.01	4/5
TR-SC-27D	8.5x6.5x2.75" Fiber Tray, 2 Compt	500	125	36.3	3.22	4/5
TR-SC-UF	10.5x8.5x1" Fiber Tray, 5 Compt	400	100	24.0	2.32	8/4
TR-SC-UL6	15x6.5x.3" Fiber Tray, 1 Compt	400	50	29.0	1.54	9/5
TRL-CS-8	LID - 8x6" Fiber Tray, Clear Ingeo™	400	50	12.5	2.70	4/6
TRL-CS-8D	LID - 8x6" Fiber Tray, Clear Ingeo™, 2 Compt	400	50	12.5	2.70	4/6
TRL-CS-10	LID - 10x7.5" Fiber Tray, Clear Ingeo™	400	50	19.5	3.85	4/5
TRL-CS-10T	LID - 10x7.5" Fiber Tray, Clear Ingeo™, 3 Compt	400	50	19.8	3.82	4/5
TRL-SC-UAR	LID - 6.5x5" Fiber Tray, Fiber	600	100	15.1	1.60	12/5

COMING SOON!

COMING SOON!

COMING SOON!

NEW!

COMING SOON!

COMING SOON!



Item #	Catering Pans	Case Count	Pack Count	Gross (lbs)	Case Cube	TI/HI
CA-SC-120L	120 oz Fiber Catering Pan, Half Size, 1 Compt	200	25	29.0	3.30	4/6
CA-SC-112DL	112 oz Fiber Catering Pan, Half Size, 2 Compt	200	25	29.0	3.30	4/6
CA-SC-104TL	104 oz Fiber Catering Pan, Half Size, 3 Compt	200	25	29.0	3.30	4/6
CA-SC-120V	120 oz Fiber Catering Pan, Half Size, Adjustable	200	25	31.0	3.81	4/4
CA-SC-280	280 oz Fiber Catering Pan, Full Size, 1 Compt	100	50	29.7	3.12	4/4
DV-SC	Extra dividers for Adjustable Catering Pan	-	-	-	-	-
CAL-SC-104	LID - 104 to 120 Catering Pans, Fiber	200	25	19.0	2.16	6/6

NEW!

NEW!

NEW!

COMING SOON!

COMING SOON!

COMING SOON!

NEW!



## PLANT FIBER TO GO BOXES | COMPOST-A-PAKS™

- Made from leftover agricultural fiber
- Suitable for food up to 200°F
- Clear lids made from NatureWorks Ingeo™ compostable plastic, derived from corn grown in the USA
- No wax or plastic lining
- Microwave and freezer safe (clear lids are not microwave safe)
- Compost in 2-4 months in a commercial composting facility

Item #	To Go Boxes	Case Count	Pack Count	Gross (lbs)	Case Cube	TI/HI
CT-SC-U2	8.8x6.8x2.25" Fiber Box	400	50	24.3	1.96	6/5
CT-SC-U2L	PLA-Lined 8.8x6.8x2.25" Plant Fiber Box	400	50	24.3	1.96	6/5
CT-SC-U3	8.8x6.8x3" Fiber Box	400	50	26.5	2.23	6/5
CTL-SC-U3	LID - Fiber Boxes, Fiber	400	50	19.0	1.90	6/5
CTL-CS-3	LID - Fiber Boxes, Clear Ingeo™	400	50	15.5	3.46	6/4

Item #	COMPOST-A-PAK™	Case Count	Pack Count	Gross (lbs)	Case Cube	TI/HI
FP-SC-1	24 oz Fiber COMPOST-A-PAK™	200	50	13.0	1.77	16/4
FP-SC-2	48 oz Fiber COMPOST-A-PAK™	200	50	19.0	3.06	6/3
FP-SC-U3	64 oz Fiber COMPOST-A-PAK™	200	50	24.5	2.99	6/5

COMING SOON!

NEW!

NEW!



## TPLA CUTLERY

- Made from 70% non-GMO compostable plastic and 30% talc
- Suitable for food up to 200°F
- Packaging for wrapped cutlery is certified compostable
- Compost in 3-5 months in a commercial composting facility

Item #	Cutlery	Case Count	Pack Count	Gross (lbs)	Case Cube	TI/HI
SP-CS-3	3" Tasting Spoon - 120°F	3000	200	10.0	0.90	9/10
SP-CS-WH	6" Ice Cream Spoon - 120°F	1000	50	11.0	0.44	20/6
FO-PS-6	6.3" Fork	1000	50	12.6	0.37	20/6
KN-PS-6	6.7" Knife	1000	50	12.5	0.39	20/6
SP-PS-6	6" Spoon	1000	50	12.5	0.44	20/6
SO-PS-B	6" Soup Spoon	1000	50	14.0	0.49	20/6
SP-TP-AS	6" Asian Soup Spoon	500	25	12.3	0.67	20/6
RK-PS-B	6" Spork	1000	50	14.0	0.44	20/6
AS-PS-TN	6" Set: (Knife, Fork, Spoon, Napkin) - Wrapped	250	—	12.0	1.00	9/8
AS-PS-FKN	6" Set: (Fork, Knife, Napkin) - Wrapped	500	—	16.0	1.47	9/6
FO-PS-I	6.3" Fork - Individually Wrapped	750	—	11.0	1.07	9/8
KN-PS-I	6.7" Knife - Individually Wrapped	750	—	11.0	0.63	15/8
SP-PS-I	6" Spoon - Individually Wrapped	750	—	11.0	1.07	9/8
SO-PS-I	6" Soup Spoon - Individually Wrapped	750	—	12.0	1.07	9/8

NEW!





## PAPER HOT CUPS | HEAT-RESISTANT LIDS | SLEEVES

- White & Kraft cups made from FSC® paper (FSC-C028481) with NatureWorks Ingeo™ bio-lining
- Double wall cups made from Sustainable Forestry Initiative certified paper with NatureWorks Ingeo™ bio-lining
- Heat-resistant lids (180° F) made from NatureWorks Ingeo™ compostable plastic, derived from corn grown in the USA
- Suitable for food up to 220°F
- Microwave and freezer safe. Not recommended for high-wattage microwaves. Lids are not microwave safe.
- Compost in 2-4 months in a commercial composting facility

Item #	Hot Cups & Lids	Case Count	Pack Count	Gross (lbs)	Case Cube	TI/HI
CU-PA-4	4 oz Paper Hot Cup - White	1000	50	10.5	1.05	15/5
CU-PA-6	6 oz Paper Hot Cup - White	1000	50	13.5	1.32	9/5
CU-PA-8	8 oz Paper Hot Cup - White	1000	50	20.5	2.17	9/4
CU-PA-10	10 oz Paper Hot Cup - White	1000	50	25.2	2.81	6/4
CU-PA-12	12 oz Paper Hot Cup - White	1000	50	29.0	3.28	6/3
CU-PA-16	16 oz Paper Hot Cup - White	1000	50	35.0	4.18	6/3
CU-PA-20	20 oz Paper Hot Cup - White	1000	50	36.0	4.18	6/3
CU-PA-8-K	8 oz Paper Hot Cup - Kraft	1000	50	19.0	2.33	9/4
CU-PA-10-K	10 oz Paper Hot Cup - Kraft	1000	50	23.5	2.86	6/4
CU-PA-12-K	12 oz Paper Hot Cup - Kraft	1000	50	25.0	3.28	6/3
CU-PA-16-K	16 oz Paper Hot Cup - Kraft	1000	50	32.0	3.95	6/3
CU-PA-20-K	20 oz Paper Hot Cup - Kraft	1000	50	35.0	4.11	6/3
CU-PA-8D	8 oz Double-Wall Paper Hot Cup	1000	50	32.0	3.04	9/3
CU-PA-12D	12 oz Double-Wall Paper Hot Cup	1000	50	45.0	4.75	4/3
CU-PA-16D	16 oz Double-Wall Paper Hot Cup	600	40	31.0	3.02	8/3
CUL-CS-8	LID - 8 oz Hot Cups, White	1000	50	8.0	1.52	6/7
CUL-CS-12	LID - 10-20 oz Hot Cups, White	1000	50	9.3	2.08	6/7
CUL-CS-12F	LID - 10-20 oz Hot Cups for cold liquid use, Clear	1000	50	9.3	2.06	8/5



Item #	Hot Cup Sleeves	Case Count	Pack Count	Gross (lbs)	Case Cube	TI/HI
SL-PA-ME	8 oz Sleeves- 100% post-consumer recycled paper, unbleached	1000	50	9.0	0.46	9/15
SL-PA-LG	10-24 oz Sleeves - 100% post-consumer recycled paper, unbleached	1000	50	13.0	0.51	9/13



## PAPER HOT BOWLS | HEAT-RESISTANT LIDS

- Made from FSC® paper (FSC-C028481) with NatureWorks Ingeo™ bio-lining
- Heat-resistant lids (180° F) made from NatureWorks Ingeo™ compostable plastic, derived from corn grown in the USA
- Suitable for food up to 220°F (except for clear domed lids, which cannot exceed 120)
- Microwave and freezer safe. Not recommended for high-wattage microwaves. Lids are not microwave safe.
- Compost in 2-4 months in a commercial composting facility

Item #	Soup Bowls & Lids	Case Count	Pack Count	Gross (lbs)	Case Cube	TI/HI
BO-PA-8	8 oz Paper Bowl	1000	50	19.0	2.65	6/5
BO-PA-12	12 oz Paper Bowl	500	50	15.0	2.25	8/5
BO-PA-16	16 oz Paper Bowl	500	50	18.0	3.41	8/3
BO-PA-32	32 oz Paper Bowl	500	25	25.0	3.54	4/6
BOL-CS-8	LID - 6-8 oz Paper Bowls, White	1000	50	9.5	1.96	6/7
BOL-CS-8D	LID - 6-8 oz Paper Bowls, Domed, Clear*	1000	50	8.0	2.26	4/9
BOL-CS-12	LID - 12-32 oz Paper Bowls, White	1000	50	16.0	3.16	4/7
BOL-CS-12D	LID - 12-32 oz Paper Bowls, Domed, Clear*	500	50	9.0	1.88	6/7



**COMING SOON!**



**NEW!**

\*Not suitable for foods over 120°F

# INGEO™ COLD CUPS | LIDS | STRAWS | SOUFFLÉ CUPS

- Made from NatureWorks Ingeo™ compostable plastic, derived from corn grown in the USA
- Suitable for food up to 120°F
- Freezer safe
- Compost in 2-4 months in a commercial composting facility



Item #	Cold Cups & Lids	Case Count	Pack Count	Gross (lbs)	Case Cube	TI/HI
CP-CS-3	3 oz Clear Cold Cup	2500	125	15.5	1.82	6/6
CP-CS-5	5 oz Clear Cold Cup	2000	50	19.0	2.89	5/6
CP-CS-6	6 oz Clear Cold Cup	2000	50	18.0	2.89	5/6
CP-CS-7	7 oz Clear Cold Cup	2000	50	23.5	3.16	5/6
CP-CS-9	9 oz Clear Cold Cup	2000	50	32.0	3.21	5/6
CP-CS-9Q	9 oz Squat Clear Cold Cup	1000	50	18.8	2.69	6/5
CP-CS-10	10 oz Clear Cold Cup	1000	50	21.5	2.59	6/5
CP-CS-12	12 oz Clear Cold Cup	1000	50	26.0	2.78	6/5
CP-CS-14	14 oz Clear Cold Cup	1000	50	24.8	2.96	6/5
CP-CS-16	16 oz Clear Cold Cup	1000	50	29.0	2.96	6/5
CP-CS-20	20 oz Clear Cold Cup	1000	50	35.5	4.72	6/3
CP-CS-24	24 oz Clear Cold Cup	1000	50	36.0	4.81	6/3
CP-CS-32	32 oz Clear Cold Cup	300	25	15.0	2.12	6/5
CPL-CS-2S	LID - 2 to 3 oz Cold Cups, Flat, Clear	2000	100	6.8	1.05	12/6
CPL-CS-9	LID - 2 oz Flat to 9 oz Cold Cups, Raised, No Straw Hole, Clear	2000	50	13.0	2.66	4/6
CPL-CS-9F	LID - 2 oz Flat to 9 oz Cold Cups, Flat, No Straw Hole, Clear	1000	50	5.0	1.38	9/7
CPL-CS-12	LID - 9Q to 24 oz Cold Cups, Straw Hole, Clear	1000	100	8.0	2.14	4/8
CPL-CS-12D	LID - 9Q to 24 oz Cold Cups, Dome, Clear	1000	100	11.0	1.84	4/8
CPL-CS-12DP	LID - 9Q to 24 oz Cold Cups, Dome, No Straw Hole, Clear	1000	100	11.0	1.84	4/8
CPL-CS-12SH	LID - 9Q-24 oz Cold Cups with Soufflé Holder for CP-CS-2SF & CP-CS-4S	1000	100	11.0	2.22	4/7
CPL-CS-32	LID - 32 oz Cold Cups, Straw Hole, Clear	600	50	5.5	1.35	6/8



NEW!



Item #	Straws	Case Count	Pack Count	Gross (lbs)	Case Cube	TI/HI
ST-CS-8W	0.25x7.9" Straw - Wrapped, Clear	10000	100	26.0	3.87	4/5
ST-CS-8	0.25x7.9" Straw - Unwrapped, Clear	10000	100	22.0	3.17	4/6



Item #	Salsa Cups, Soufflés & Lids	Case Count	Pack Count	Gross (lbs)	Case Cube	TI/HI
CP-CS-1S	1 oz Clear Soufflé Cup	3000	100	11.0	1.44	6/9
CP-CS-2S	2 oz Clear Soufflé Cup	2000	100	11.0	1.30	8/7
CP-CS-2SF	2 oz Clear, Flat Soufflé Cup	2000	50	15.0	2.48	4/6
CP-CS-4S	4 oz Clear Soufflé Cup	1000	50	12.0	1.44	9/7
CPL-CS-2P	2 oz Clear Parfait Insert - 9 oz Cold Cup	2000	100	11.5	1.46	9/6
CPL-CS-9	LID - Raised, No Hole - 4 to 9 oz Clear Cold Cups	2000	50	13.0	2.66	4/6
CPL-CS-2S	LID - 2 to 3 oz Cold Cups, Flat, Clear	2000	100	6.8	1.05	12/6



# INGEO™ CLAMS | SALAD BOWLS | SUSHI BOX | DELI CONTAINERS

- Made from NatureWorks Ingeo™ compostable plastic, derived from corn grown in the USA
- Suitable for food up to 120°F
- Freezer safe
- Compost in 2-4 months in a commercial composting facility



Item #	Clear Clamshells	Case Count	Pack Count	Gross (lbs)	Case Cube	TI/HI
KL-CS-6	6x6x3" Clear Hinged Clamshell	250	125	15.5	1.17	12/6
KL-CS-7	7x7x3" Clear Hinged Clamshell	250	125	17.9	2.89	4/5
KL-CS-8	8x8x3" Clear Hinged Clamshell	250	125	25.5	4.05	4/3
KL-CS-8T	8x8x3" Clear Hinged Clamshell, 3 Compt	250	125	25.5	5.03	4/3
KL-CS-95	9x5x3" Clear Hinged Clamshell	250	125	17.0	3.60	6/4



NEW!

Item #	Salad Bowls/Sushi Trays & Lids	Case Count	Pack Count	Gross (lbs)	Case Cube	TI/HI
SB-CS-16	16 oz Clear Salad Bowl	450	50	9.6	2.39	6/4
SB-CS-24	24 oz Clear Salad Bowl	600	50	18.4	4.18	4/4
SB-CS-32	32 oz Clear Salad Bowl	600	50	22.5	4.28	4/4
SB-CS-48	48 oz Clear Salad Bowl	300	50	18.0	2.64	6/5
SBL-CS-16	LID - 16 oz Salad Bowls, Dome, Clear	450	50	8.0	1.88	8/4
SBL-CS-32	LID - 24-48 oz Salad Bowls, Dome, Clear	600	50	16.8	3.88	4/3
SU-CS-75	7x5x2" Black Sushi Box w/ Clear Lid	300	—	11.3	1.46	10/5



NEW!



NEW!

Item #	Rectangular Deli Containers	Case Count	Pack Count	Gross (lbs)	Case Cube	TI/HI
RD-CS-8	8 oz Clear Rectangular Deli	900	100	16.0	3.25	4/5
RD-CS-12	12 oz Clear Rectangular Deli	900	100	19.0	2.99	4/5
RD-CS-16	16 oz Clear Rectangular Deli	900	100	23.9	3.43	4/5
RD-CS-24	24 oz Clear Rectangular Deli	600	100	20.8	4.08	5/4
RD-CS-32	32 oz Clear Rectangular Deli	600	100	25.0	4.28	5/4
RD-CS-48	48 oz Clear Rectangular Deli	400	100	21.5	3.87	4/5
RD-CS-64	64 oz Clear Rectangular Deli	400	100	23.1	4.05	4/5
RDL-CS-8	LID - 8-16 oz Rectangular Delis, Clear	900	100	13.4	3.17	4/5
RDL-CS-24	LID - 24-32 oz Rectangular Delis, Clear	600	50	15.0	3.21	6/3
RDL-CS-48	LID - 48-64 oz Retangular Delis, Clear	400	50	13.4	2.96	4/5



NEW!

NEW!

NEW!

Item #	Round Deli Containers	Case Count	Pack Count	Gross (lbs)	Case Cube	TI/HI
DC-CS-8	8 oz Clear Round Deli	1000	50	19.7	3.37	4/5
DC-CS-12	12 oz Clear Round Deli	1000	50	23.0	3.84	4/7
DC-CS-16	16 oz Clear Round Deli	1000	50	29.0	4.04	4/5
DC-CS-24	24 oz Clear Round Deli	500	50	20.0	2.56	8/5
DC-CS-32	32 oz Clear Round Deli	500	25	24.5	4.62	4/5
DCL-CS-12	LID - 8-32 oz Round Delis, Clear	1000	50	11.8	3.91	6/4



NEW!

NEW!

## ZEROWARE™ REUSABLE COMPOSTABLE PLATES | BOWLS

- Made from 70% compostable plastic and 30% talc
- Dishwasher and freezer safe
- Suitable for food up to 200°F
- Compost in 3-5 months in a commercial composting facility

Item #	ZeroWare™ Reusable Plates & Bowls	Case Count	Pack Count	Gross (lbs)	Case Cube	TI/HI
PL-TP-9	9" ZeroWare™ Reusable Plate	50	5	14.1	0.36	20/7
PL-TP-10	10" ZeroWare™ Reusable Plate	50	5	18.0	0.45	16/7
BO-TP-20	20 oz ZeroWare™ Reusable Bowl	50	5	13.0	0.40	30/6



## 100% PCW RECYCLED PAPER NAPKINS | TOWELS

- Made from 100% post-consumer recycled paper
- Compost in 1-2 months in a commercial composting facility

Item #	Napkins & Towels	Case Count	Pack Count	Gross (lbs)	Case Cube	TI/HI
NP-SC-LN	13x13" - Lunch Napkin (2-ply)	4500	250	40.0	3.24	6/4
NP-SC-DN	15x16" - Dinner Napkin (2-ply)	3000	150	36.0	3.07	6/5
TW-PA-MF	9x9" - Multi-fold Towels (1-ply)	4000	250	19.7	1.75	6/8



## WASTE BAGS | TRASH LINERS | LAWN & LEAF BAGS

- Made from a mixture of synthetic and starch based plastics
- Certified by Vincotte "OK Compost Home" as suitable for composting in a backyard or garden
- Compost in 2-4 months

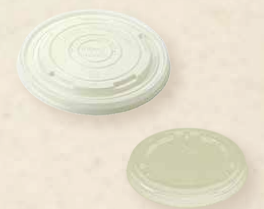
Item #	Bags	Case Count	Pack Count	Gross (lbs)	Case Cube	TI/HI
BG-CS-3	17x18" - 3 Gallon Waste Bag - .6 mil	500	50	8.0	0.21	18/10
BG-CS-13	23x29" - 13 Gallon Kitchen Bag - .6 mil	200	20	8.0	0.35	20/10
BG-CS-33	33x39" - 33 Gallon Lawn Bag - 1 mil	150	15	18.2	0.49	15/5
BG-CS-39	35x43" - 39 Gallon Trash Bag - 1 mil	100	10	19.3	0.36	8/9
BG-CS-45	40x46" - 45 Gallon Trash Bag - 1 mil	100	10	17.2	0.42	12/5
BG-CS-55	36x58" - 55 Gallon Trash Bag - 1 mil	100	10	19.0	0.48	15/5



## MULTI-USE LIDS

Item #	Multi-Use Lids
BOL-CS-8	6-8 oz Paper Bowl Lid compatible with 10-20 oz Hot Cups and 6 oz Plant Fiber Bowl
BOL-CS-12	12-32 oz Paper Bowl Lid compatible with 12 & 16 oz Fiber Bowls
CPL-CS-9/9F*	Clear 2 oz Flat-9 oz Cold Cup lid compatible with 4 oz Plant Fiber Cup
CUL-CS-12F	Clear 12-22 oz Paper Cold Cup Lid compatible with 10-20 oz Paper Hot Cups

\* Lid not suitable for hot beverages



## CUSTOM PRINTING

- Please allow a lead time of at least 8-10 Weeks for ALL custom printed products
- The monthly deadline for custom print orders is the 15th of each month
- Contact your sales representative for exact dates and production schedules

## CUSTOM PRINT INGEO™ GOLD CUPS

- Made from NatureWorks Ingeo™ compostable plastic, derived from corn grown in the USA
- Suitable for food up to 120°F
- Freezer safe
- Compost in 2-4 months in a commercial composting facility

Item #	Cold Cups	Case Count	Case MOQ	Case Cube	TI/Hi
CP-CS-3	3 oz Clear Cold Cup	2500	100	1.82	6/6
CP-CS-5	5 oz Clear Cold Cup	2000	50	2.89	5/6
CP-CS-6	6 oz Clear Cold Cup	2000	50	2.89	5/6
CP-CS-7	7 oz Clear Cold Cup	2000	50	3.16	5/6
CP-CS-9	9 oz Tall Clear Cold Cup	2000	50	3.21	5/6
CP-CS-9Q	9 oz Squat Clear Cold Cup	1000	50	2.69	6/5
CP-CS-10	10 oz Clear Cold Cup	1000	50	2.59	6/5
CP-CS-12	12 oz Clear Cold Cup	1000	50	2.78	6/5
CP-CS-14	14 oz Clear Cold Cup	1000	100	2.96	6/5
CP-CS-16	16 oz Clear Cold Cup	1000	50	2.96	6/5
CP-CS-20	20 oz Clear Cold Cup	1000	50	4.72	6/3
CP-CS-24	24 oz Clear Cold Cup	1000	50	4.81	6/3
CP-CS-32	32 oz Clear Cold Cup	300	333	2.12	6/5



## CUSTOM PRINT INGEO™ ROUND DELI CONTAINERS

- Made from NatureWorks Ingeo™ compostable plastic, derived from corn grown in the USA
- Suitable for food up to 120°F
- Freezer safe
- Compost in 2-4 months in a commercial composting facility

Item #	Round Deli Containers	Case Count	Case MOQ	Case Cube	TI/Hi
DC-CS-8	8 oz Clear Round Deli	1000	100	3.37	4/5
DC-CS-12	12 oz Clear Round Deli	1000	100	3.84	4/7
DC-CS-16	16 oz Clear Round Deli	1000	100	4.04	4/5
DC-CS-24	24 oz Clear Round Deli	500	100	2.56	8/5
DC-CS-32	32 oz Clear Round Deli	500	100	4.62	4/5



## CUSTOM PRINT INGEO™ SOUFFLÉ CUPS

- Made from NatureWorks Ingeo™ compostable plastic, derived from corn grown in the USA
- Suitable for food up to 120°F
- Freezer safe
- Compost in 2-4 months in a commercial composting facility

Item #	Soufflé Cup	Case Count	Case MOQ	Case Cube	TI/Hi
CP-CS-4S	4 oz Clear Soufflé Cup - 110°F	1000	50	1.44	9/7



## CUSTOM PRINT PAPER HOT CUPS

- White & Kraft cups made from FSC® paper (FSC-C028481) with NatureWorks Ingeo™ bio-lining
- Double wall cups made from Sustainable Forestry Initiative certified paper with NatureWorks Ingeo™ bio-lining
- Heat-resistant lids (180° F) made from NatureWorks Ingeo™ compostable plastic, derived from corn grown in the USA
- Suitable for food up to 220°F
- Microwave and freezer safe. Not recommended for high-wattage microwaves. Lids are not microwave safe.
- Compost in 2-4 months in a commercial composting facility



Item #	Hot Cups	Case Count	Case MOQ	Case Cube	TI/HI
CU-PA-4	4 oz Paper Hot Cup - White	1000	100	1.05	15/5
CU-PA-6	6 oz Paper Hot Cup - White	1000	100	1.32	9/5
CU-PA-8	8 oz Paper Hot Cup - White	1000	100	2.17	9/4
CU-PA-10	10 oz Paper Hot Cup - White	1000	100	2.81	6/4
CU-PA-12	12 oz Paper Hot Cup - White	1000	100	3.28	6/3
CU-PA-16	16 oz Paper Hot Cup - White	1000	100	4.18	6/3
CU-PA-20	20 oz Paper Hot Cup - White	1000	100	4.18	6/3



Item #	Kraft Hot Cups	Case Count	Case MOQ	Case Cube	TI/HI
CU-PA-8-K	8 oz Paper Hot Cup - Kraft	1000	100	2.33	9/4
CU-PA-10-K	10 oz Paper Hot Cup - Kraft	1000	100	2.86	6/4
CU-PA-12-K	12 oz Paper Hot Cup - Kraft	1000	100	3.28	6/3
CU-PA-16-K	16 oz Paper Hot Cup - Kraft	1000	100	3.95	6/3
CU-PA-20-K	20 oz Paper Hot Cup - Kraft	1000	100	4.11	6/3



Item #	Double Wall Cups	Case Count	Case MOQ	Case Cube	TI/HI
CU-PA-8D	8 oz Double-Wall Paper Hot Cup	1000	100	3.04	9/3
CU-PA-12D	12 oz Double-Wall Paper Hot Cup	1000	100	4.75	4/3
CU-PA-16D	16 oz Double-Wall Paper Hot Cup	600	100	3.02	8/3
CU-PA-20D	20 oz Double-Wall Paper Hot Cup	600	100	—	—



## CUSTOM PRINT WHITE PAPER BOWLS

- Made from FSC® paper (FSC-C028481) with NatureWorks Ingeo™ bio-lining
- Heat-resistant lids (180° F) made from NatureWorks Ingeo™ compostable plastic, derived from corn grown in the USA
- Suitable for food up to 220°F
- Microwave and freezer safe. Not recommended for high-wattage microwaves. Lids are not microwave safe.
- Compost in 2-4 months in a commercial composting facility

Item #	Soup Bowls	Case Count	Case MOQ	Case Cube	TI/HI
BO-PA-8	8 oz Paper Bowl	1000	100	2.65	6/5
BO-PA-12	12 oz Paper Bowl	500	200	2.25	8/5
BO-PA-16	16 oz Paper Bowl	500	200	3.41	8/3
BO-PA-32	32 oz Paper Bowl	500	200	3.54	4/6



## CUSTOM PRINT RECYCLED PAPER HOT CUP SLEEVES

- Made from 100% post-consumer waste recycled paper

Item #	Hot Cup Sleeves	Case Count	Case MOQ	Case Cube	TI/HI
SL-PA-ME	8 oz Paper Sleeves - 100% post-consumer recycled paper	1000	100	0.46	9/15
SL-PA-LG	10-24 oz Paper Sleeves - 100% post-consumer recycled paper	1000	100	0.51	9/13



## CUSTOM PRINT COMPOSTABLE BAGS

- Made from a mixture of synthetic and starch based plastics
- Certified by Vincotte "OK Compost Home" as suitable for composting in a backyard or garden
- Compost in 2-4 months

Item #	Bags	Case Count	Case MOQ	Case Cube	TI/HI
BG-CS-3	17x18" - 3 Gallon Waste Bag - .6 mil	500	300	0.21	18/10
BG-CS-13	23x29" - 13 Gallon Kitchen Bag - .6 mil	200	350	0.35	20/10
BG-CS-33	33x39" - 33 Gallon Lawn Bag-1 mil	150	167	0.49	15/5
BG-CS-39	35x43" - 39 Gallon Trash Bag - 1 mil	100	200	0.36	8/9
BG-CS-45	40x46" - 45 Gallon Trash Bag - 1 mil	100	150	0.42	12/5
BG-CS-55	36x58" - 55 Gallon Trash Bag - 1 mil	100	150	0.48	15/5



## SPECIAL ORDER ITEMS

- Please allow a lead time of at least 8-10 weeks for ALL special order products
- Some special order items may be in stock and available immediately
- Contact your sales representative for availability

Item #	Special Order Items	Case Count	Case MOQ	Case Cube	TI/HI
CP-CS-3S	3 oz Clear Soufflé Cup - 110°F	2000	22	4.44	6/3
CU-PA-20D	20 oz Double Wall Paper Hot Cup w/ Bio-Lining	600	100	—	—
TR-SC-S	6 Compartment Tray, Fiber	400	40	—	—
AS-PS-6T	6" Set: (Knife, Fork, Spoon) - 200°F - Wrapped in Compostable Packaging	250	11	—	—
RK-CS-45	4.5" Tasting Sporks - 120°F	3000	22	1.22	9/7
ST-CS-6	6 ¼" Clear Straw - Unwrapped	10000	17	3.39	4/6
ST-CS-J8	0.3x7.9" Jumbo Straw - Unwrapped, Clear	7000	—	4.32	3/6
BG-CS-10S	18x22" Regular Shopping Bag - .8 mil	500	13	0.39	—
TO-SC-U9H	Heavyweight 9x9x3" Fiber Clamshell, 1 Compt	300	—	2.60	6/4
TO-SC-U9TH	Heavyweight 9x9x3" Fiber Clamshell, 3 Compt	300	—	2.60	6/4

# World Centric Products are BPI Certified

The following PRODUCTS have been found to comply with the specifications established in the American Society for Testing and Materials standard ASTM D6400 and/or D6868 in accordance with the terms and conditions of the "Biodegradable Products Institute - Certification Program for Products Made of Compostable Plastics - Program Rules":

Product	Expiration Date/ Certificate #
Natural colored molded pulp fiber products made from sugar cane bagasse and wheat straw, with a maximum thickness of 0.54mm	March 03, 2017 #1918104-4
White cutlery, bowls & plates with a max. thickness of 2.68 mm made from a BPI approved resin	May 31, 2016 #1918104-3
Clamshells, deli containers, trays, soufflé cups, straws, and cold cups and cold cup lids made from a BPI-certified resin with a maximum thickness of 0.35mm	May 31, 2016 #1918104-1
Paper cups coated with NatureWorks Ingeo PLA	February 29, 2016 #1918104-9
Compostable bags with green printing, with a max. thickness of 1.0 mil, made from BPI approved resins	August 08, 2015 #1918104-9
White-colored hot drink lids with a maximum thickness of 0.37mm, made from BPI-approved resin	April 30, 2018 #1918104-12
Food Service Items made from Miscanthus fiber (maximum thickness of 0.75mm)	September 09, 2018 #1918104-13

Certifications awarded by the Biodegradable Products Institute can be found on the World Centric website ([www.WorldCentric.org](http://www.WorldCentric.org)) and permit the use of the Certification Program Logo depicted below subject to all conditions and terms of the Program Rules and the License Agreement between the Biodegradable Products Institute and the Licensee, World Centric.



**COMPOSTABLE**  
IN INDUSTRIAL FACILITIES

Check locally, as these do not exist in many communities. **Not suitable for backyard composting.** CERT # 1918104



## World Centric products are USDA Certified Biobased Products, made from renewable agricultural ingredients

The USDA BioPreferred label designates biobased products that are composed wholly or significantly of agricultural ingredients—renewable plant, animal, marine or forestry materials.

All products with this label have been independently certified to meet USDA BioPreferred program standards for biobased content. Biobased products help add value to commodities, create jobs in rural communities, increase U.S. energy independence by reducing the use of petroleum in manufactured products, and may also reduce the introduction of fossil carbon into the atmosphere, thus mitigating potential climate change impacts.

Learn more at [www.BioPreferred.gov](http://www.BioPreferred.gov)



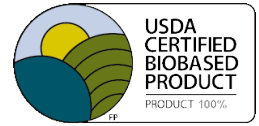
**Compostable Heat Resistant Cutlery: 93%**  
Forks | Spoons | Knives | Sporks



**Compostable PLA: 99%**  
Clamshells | Deli Containers | Cold Cups | Straws



**Compostable Plant Fiber: 95%**  
Clamshells | Plates | Bowls | Trays



**Compostable Paper/PLA Blended Items: 100%**  
Hot Cups | Soup Bowls

*SCS Global Services does hereby certify that an independent audit has been completed and conformity to the applicable standard(s) has been confirmed for:*

## World Centric

101 H Street, Suite M, Petaluma, CA 94952-5152, United States

**This certificate covers the trade of paper products using the transfer system.**

The facility(s) are hereby Chain of Custody certified to sell products as:

### FSC Mix

The assessment has been conducted by Scientific Certification Systems (SCS) in accordance with the rules of the Forest Stewardship Council® A.C. (FSC).

FSC Standard: FSC-STD-40-004 V2-1

Certificate Code: SCS-COC-002849 Trademark License Code: FSC-C028481

Valid from 12 November 2014 to 11 November 2019

This certificate itself does not constitute evidence that a particular product supplied by the certificate holder is FSC-certified (or FSC Controlled Wood). Products offered, shipped or sold by the certificate holder can only be considered covered by the scope of this certificate when the required FSC claim is clearly stated on sales and delivery documents, and the validity of the certificate has been verified on <http://info.fsc.org>. A list of products that are included in the scope of this certificate may be found at <http://info.fsc.org> or will be provided by SCS on request. The certificate shall remain the property of SCS, and this certificate and all copies or reproductions of this certificate shall be returned to SCS immediately upon request.



The mark of responsible forestry





**ELISA Technologies, Inc.**  
www.elisa-tek.com



REPORT 1006085

REPORT DATE: June 22, 2010

REPORT TO: Aseem Das  
World Centric  
2121 Staunton Ct  
Palo Alto, CA 94306  
Tel: (650) 283-3797  
Fax: (866) 850-9732

SUBJECT: Sample for Gluten Analysis

RECEIVED: June 21, 2010 UPS 2<sup>nd</sup> Day Air TRK# 1Z 3V8 2E1 02 4165 2530

**ANALYTICAL RESULTS:**

CONTROL #	SAMPLE DESCRIPTION	ANALYSIS IDENTIFICATION	Gluten*
1006085-1	Wheat Straw Plates	500821 Quantitative Gluten ELISA	< 5 ppm

**RESULTS APPLY ONLY TO THE SAMPLES TESTED**

**\*NOTES:**

The assay utilizes ELISA techniques and is designed for the measurement of cereal gluten at low levels, nominally within a range of 5-80 PPM, in raw materials and finished food products; it detects both the gliadin and glutenin fractions of gluten.

These samples were tested using a "high sensitivity" modification of the gluten assay procedure, which enables a detection limit of 5 ppm gluten in most sample matrices. The quantitation limit for your sample(s) was 5 ppm.

Respectfully Submitted for **ELISA Technologies, Inc.**

By Caitlin Cislenka  
Analyst

By Laura K. Alfred  
Laura K. Alfred, Laboratory Director

End of Report

THIS REPORT SHALL NOT BE REPRODUCED EXCEPT IN ITS ENTIRETY AND WITH THE WRITTEN PERMISSION OF ELISA TECHNOLOGIES, INC.

2501 NW 66th Court, Gainesville, Florida 32653, USA  
Telephone: (352) 337-3929 • Fax No. (352) 337-3928 • E-mail: info@elisa-tek.com

Certified



Corporation™

[bcorporation.net](http://bcorporation.net)

# Declaration of Interdependence

*We envision a new sector of the economy  
which harnesses the power of private enterprise to create public benefit.  
This sector is comprised of a new type of corporation — the B Corporation —  
which is purpose-driven, and creates benefit for all stakeholders, not just shareholders.*

*As members of this emerging sector and as entrepreneurs and investors in B Corporations,*

*We hold these truths to be self-evident:  
That we must be the change we seek in the world;*

*That all business ought to be conducted as if people and place mattered;*

*That, through their products, practices, and profits, businesses should aspire to  
do no harm and benefit all.*

*To do so, requires that we act with the understanding that we are each dependent  
upon another and thus responsible for each other and future generations.*

**the change we seek™**

# WHY USE OUR PRODUCTS?

## Sustainable Materials

Made from **annually renewable plants** like sugarcane fiber, corn and wheat straw instead of non-renewable petroleum (plastics and styrofoam). Sugarcane fiber and wheat straw products are the most sustainable as they are made from discarded agricultural by-products.

## Reduce Waste

Plastic and styrofoam are derived from petroleum and create pollution and toxicity during production, use, and disposal. Compostables come from plants. They are non-toxic, non-polluting, and **reduce waste going into landfills**. They biodegrade in a commercial composting system and produce nutrient-rich soil in 3-4 months, while plastics and styrofoam persist for hundreds of years in the environment.

## Use Less Energy

Our products **require less energy** to produce than petroleum-based products and reduce greenhouse emissions, lessening the impact of global warming.

## OUR PRODUCTS ARE RESPONSIBLE FROM START TO FINISH

### CONFORM TO ASTM D-6400 STANDARD & BPI CERTIFIED

### COMPOST IN 3-4 MONTHS IN A COMMERCIAL COMPOSTING SYSTEM

#### SUGAR CANE FIBER AND WHEAT STRAW FIBER PLATES, BOWLS, TRAYS AND CLAMSHELLS

- Made from leftover agricultural fiber
- Heat resistant up to 200°F
- No wax or plastic lining
- Microwave and freezer safe
- Conform to FDA guidelines for food use

#### TPLA (70% PLA AND 30% TALC) UTENSILS

- Made from non-GMO cornstarch and talc
- Heat resistant up to 200°F
- Conform to FDA guidelines for food use

#### PAPER HOT CUPS AND BOWLS WITH INGEO™ LINING

- Made from Forest Stewardship Council® paper
- Suitable for cold & warm foods up to 120°F
- Ingeo™ lining made from corn
- Conform to FDA guidelines for food use

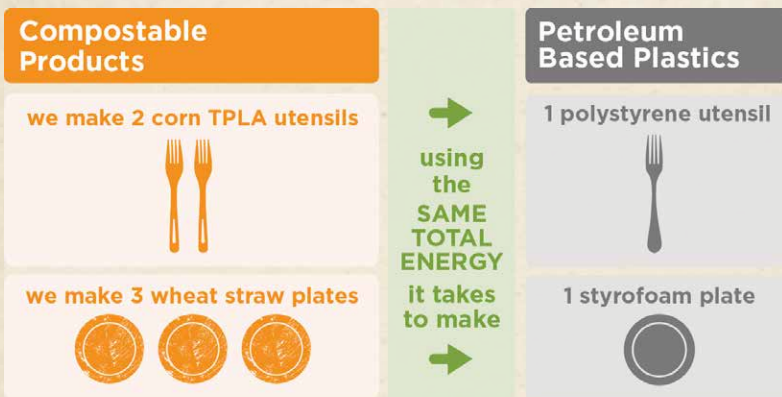
#### COLD CUPS, DELI CONTAINERS, STRAWS, HOT CUPS AND HOT CUP LIDS

- Made from Ingeo™ compostable plastic, derived from corn grown in the USA
- Heat resistant up to 120°F
- Hot cup lids suitable up to 200°F
- Conform to FDA guidelines for food use

#### TRASH, SHOPPING & YARD WASTE BAGS

- Made from a mixture of Ingeo™ and synthetic polymers
- Strong and durable
- Many different sizes available

## ACCORDING TO OUR ECO-PROFILE ANALYSIS



\*An eco-profile analysis measure the energy and other inputs required to make a product, from the extraction or harvesting of raw materials to the finished product at the factory gate.



**COMPOSTABLE**  
IN INDUSTRIAL FACILITIES

Check locally, as these do not exist in many communities. **Not suitable for backyard composting.** CERT # 1918104



Certified  
Corporation  
bcorporation.net